

## TOPWAY T2 Pre Assembled Heating Manifolds

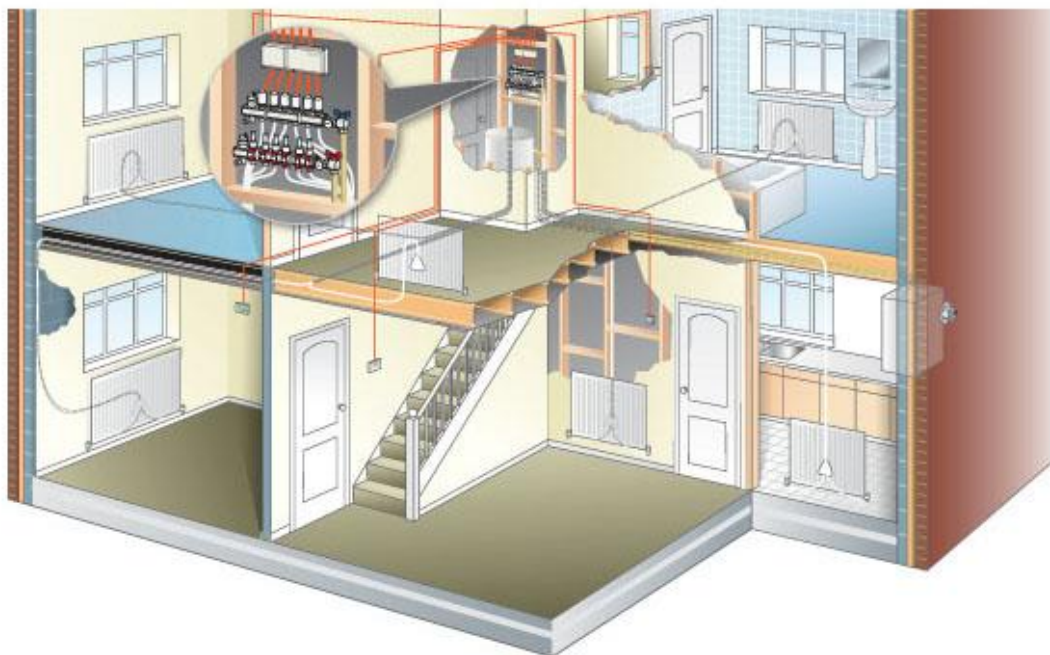
1" – 1"1/4 pre-assembled distribution manifold nickel-plated brass, 24×19 takeoffs with lockshields with the flow meters included. Takeoffs 50 mm (flow and return).

Flow rail has a white sleeved doubled regulating lockshield with a clear flow metering tube. The double regulation allows isolation and flow balancing of each circuit, with added ability to read the flow in litres per minute. Return rail has a blue capped integrated electrothermic body (ready for the head) per circuit.

Pre-assembled manifold includes no.2 drain off/fill valves; no. 2 automatic air vents; no. 2 blanking plugs. All pre-mounted onto a double offset bracket.

### Key Features

- Nickel plated extruded brass manifold pre-assembled for immediate mounting for both radiator and underfloor systems
- Available in 1" and 1¼" sizes, from 2 ways to 12 ways with integral flow control valves to suit a wide range of system requirements
- Can be surface mounted , concealed in a choice of purpose designed plastic or metal cabinets or within a partition wall for a flexible solution to location
- Manifold flow and return outlets are offset for space saving and ease of installation
- Ball valves, fittings and Monoblocco pipe connectors for a wide range of pipe types and sizes
- Electrothermic actuators and matching zone controls to meet or exceed Building Regulations requirements



**Tailored Heat Supplies Ltd**  
Warwick Mill Business Centre  
Warwick Bridge  
Carlisle CA4 8RR

t: 01228 564 564  
w: [tailoredheat.co.uk](http://tailoredheat.co.uk)  
e: [info@tailoredheat.co.uk](mailto:info@tailoredheat.co.uk)

**Company No:** 8031394  
**VAT No:** 135 1024 61

### Registered address:

Tailored Heat Supplies Limited, c/o Gordon Consultancy Limited, Hamilton, 13, the Nurseries, Linstock, Carlisle CA6 4RR